



# Palm Beach Division

LTJG Frank Verna  
Commanding Officer

**U.S. NAVAL  
SEA CADET CORPS**



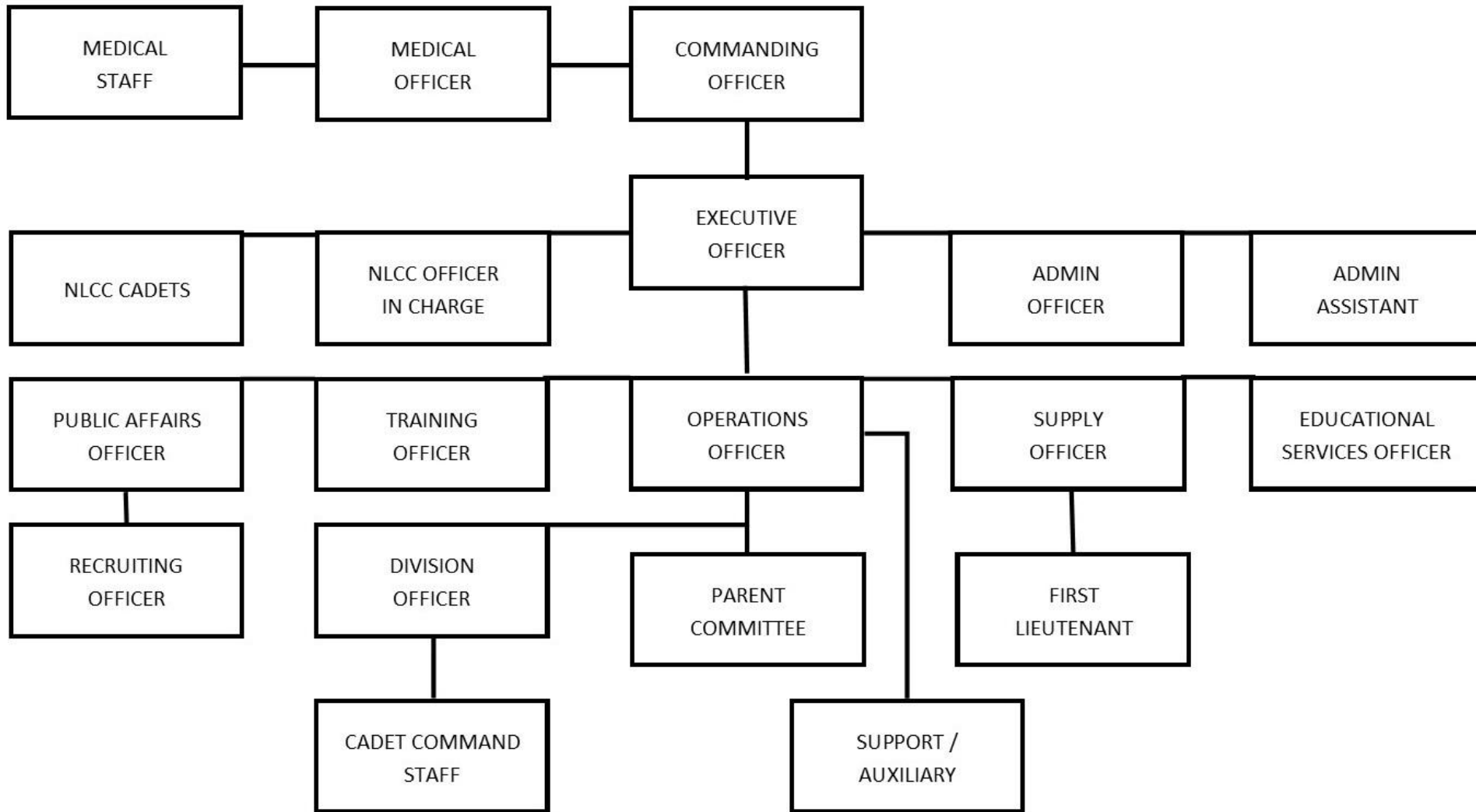
# Our Unit/Region 065-PAL

Palm Beach Division  
NOSC – West Palm Beach  
Palm Beach Maritime Academy

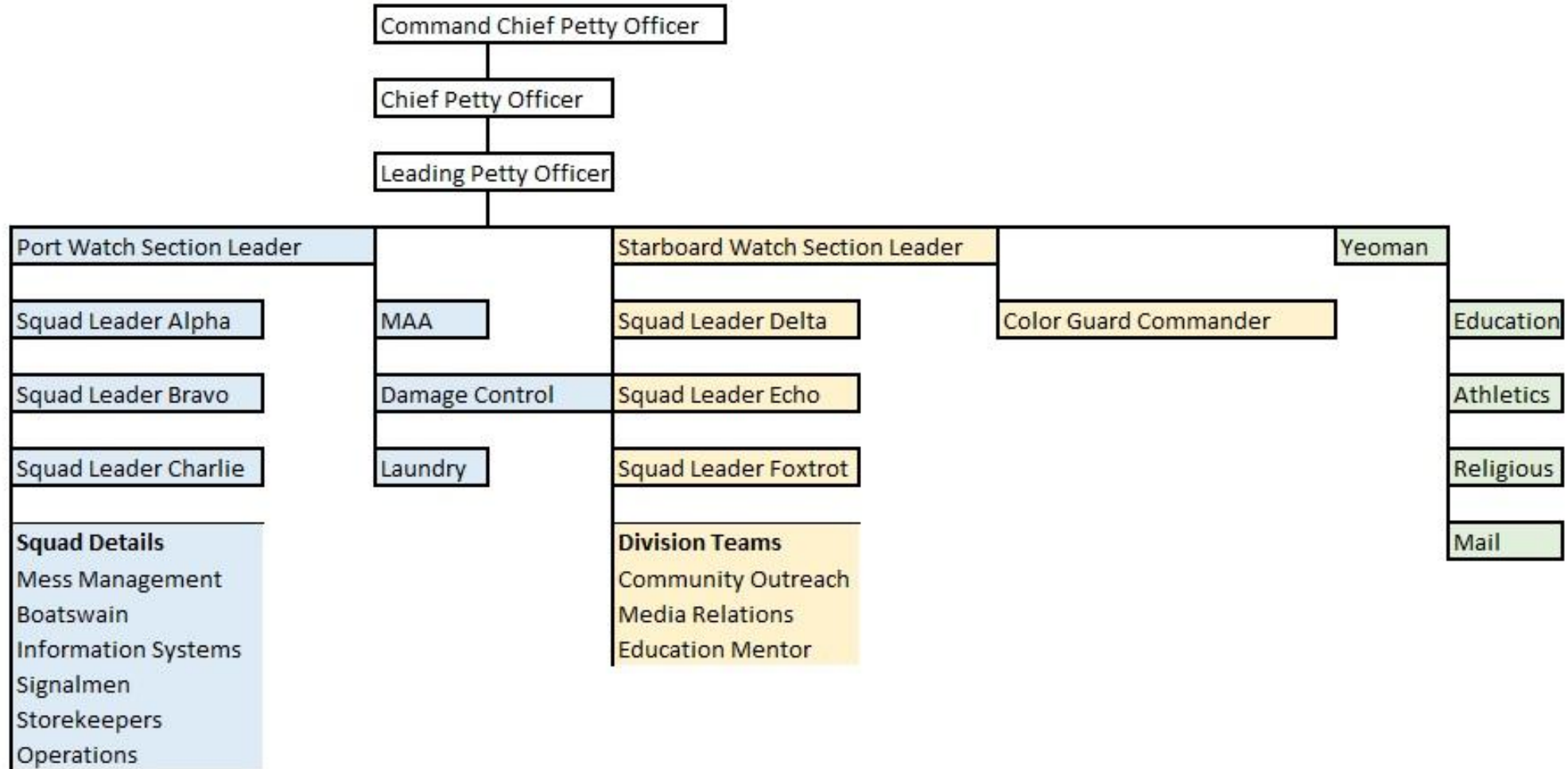
# Palm Beach Division - Overview

- Founded September 8<sup>th</sup>, 1985
- Home Port Navy Reserve Center/NOSC – West Palm Beach since 1985
- Current Drill site Palm Beach Maritime Academy
- 57 Cadets
- 81% Male – 19% Female
- 16 Adult Volunteers – 4 Full Time – 12 Part Time
- Adult backgrounds include SELRES, retired and former Army, Navy, Police and medical personnel

# PALM BEACH DIVISION COMMAND STRUCTURE



# Cadet Leadership



# Monthly and Weekly Drills

- 4 Hours=1 Drill Period
- 40 Drill Periods required per Year
- Palm Beach Div offers 80 Drill Periods
- 3<sup>rd</sup> Weekend of each month / Every Tues evening
- 75% Attendance required (30 Drills) to insure requirements are met
- Food and travel are not covered by our federal funding

# Recruit Training

- Only training required for all Sea Cadets
- 9 to 14 days / 106 hours – Trainings throughout US
- Modified from current Navy RTC curriculum
- Optional League Cadet Orientation
- Tailored to be age-appropriate
- Must complete RT to participate in AT and to advance in rate
- Physically demanding training, must pass basic PRT
- Will most likely be the hardest thing your child has done
- Marching/Swimming/Physical Training/Classwork



**U.S. NAVAL**  
SEA CADET CORPS

# Advanced Training

- Cadets must complete RT or Leaguer Orientation to participate
- AT's are required to continue rate advancement
- National and Local Trainings are available
- Over 60 different trainings available
- 5 days up to 3 weeks for away trainings
- Pre-requisites may be required for certain trainings
- Course are dictated by Naval Service Training Command
- Reviewed and approved by Coast Guard
- Support from all branches of the armed services
- Shipboard, Air Station, Bases or other non-military locations
- NSWOC and UCOIN are reserved for the most experienced cadets only
- [Summer Training - Advanced Training - HOMEPORT: Naval Sea Cadet Corps & Navy League Cadet Corps](#)



# What We Have Done



**U.S. NAVAL**  
**SEA CADET CORPS**

# 2018 Planned Local Trainings and Events

## Trainings

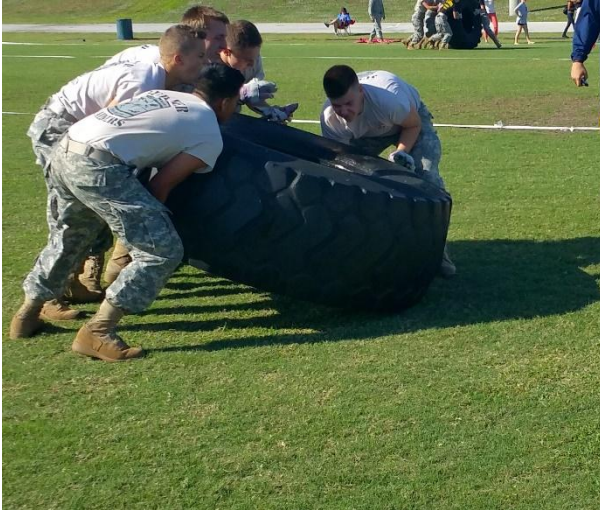
- CERT Community Emergency Response Team
- Small Boat Operations
- Field Operations / Marksmanship

## Events

- Boat and Guns Show
- SeaFest in Jupiter
- Memorial Day Color and Honor Guards



# 1<sup>st</sup> Annual Palm Beach County Military Youth Competition



**U.S. NAVAL  
SEA CADET CORPS**

# Joining

- Complete Application
- Medical Exam/Sports Physical
- One-time enrollment \$300 (cash, check or credit card)
- Covers: Insurance, security check, uniform rental fee
- \$90 annual re-enrollment (as of Jan 1, 2018, subject to increase)
- Uniform items not covered: boots, shoes, under garments, PT gear, Camelbak (optional), PFD, snorkel mask & fins (optional)
- Training gear: See Seabag List [\seabag-list\\_male\\_female.pdf](#) approximately \$200-\$250 if all purchased at WalMart



# Sponsorship and Donations

- Sponsored by the Navy League of the United States Palm Beach Council
- Supported by the U.S. Navy and U.S. Coast Guard
- Individual and Corporate Donations
- Fundraising Activities



# Expenses

- Average Yearly Operations Expenditure is \$57,000
- Avg Yearly Income from new Recruits \$9000
- Avg Yearly Donations received \$5000
- Avg Yearly Income from Drill Fees \$7200
- Avg Yearly Expense Deficit **(-\$35,800)**
- Avg Yearly Additional Cost to Cadet Family \$650 or \$55 per month (does not include Drill Fees)
- Does not include additional trainings (Local AT)



# Potentials and Desires

- More interaction with our Navy and Coast Guard
- More Active Duty and SELRES Volunteers
- Opportunities for training at NAS and Bases
- Transportation solutions
- Opportunities for shipboard embedding/sea cruises
- Need a Yamaha Outboard 115HP to 140HP
- Need two 30HP to 50HP outboards
- Opportunities for SCUBA, Sailing and Seamanship trainings





CHART YOUR  
**COURSE**

---

[www.seacadets.org](http://www.seacadets.org)

---